

308 CR 350

BLUFFSIDE LOTS 5 & 6

CON CAN, TX 78838



REAL ESTATE IS OUR BUSINESS.....  
OUR ONLY BUSINESS!



### **FEATURES**

- *SUNSET VIEWS*
- *PAVED RD FRONTAGE*
- *PVT WELL*
- *ELECTRICITY*
- *4BDRM/3BTH*
- *GRANITE CTRS*
- *SEPTIC*
- *HORSE PROPERTY*
- *PRIVATE*
- *PANARAMIC VIEWS*
- *NO HOA*
- *HORSE STALLS*
- *RIDING ARENA/TRACT*

**FRIO CANYON  
REAL ESTATE**

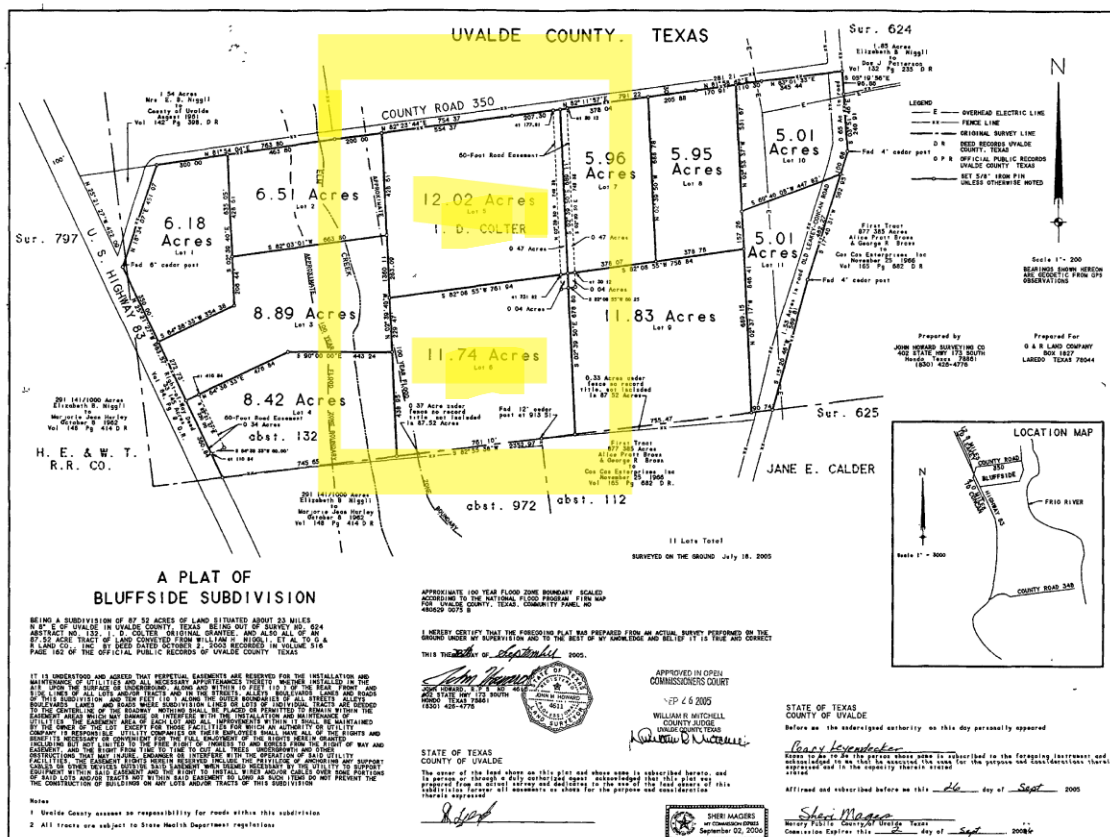
230 S. US HWY. 83  
P.O. Box 1489  
LEAKEY, TX 78873

830-232-4500 OFC  
830-232-4501 FAX



This property really captures the essence of Hill Country living! With 23.76 acres that spreads widely, you have plenty of space for outdoor activities and relaxation. The combination of a custom home nestled among pecan trees, and a new in-ground pool. Right next to pool enjoy covered entertainment area relaxing or cooking for the entire family. There are a couple of areas for horses making it a versatile retreat. The proximity to both Concan and Garner State Park is a huge advantage for those who enjoy water activities and social gatherings. Plus, having a barn and fenced pastures adds practicality for anyone interested in farming or equestrian pursuits. The mature pecan trees and the local wildlife, like axis deer and whitetail, enhance the natural beauty of the property. It sounds like a place where you can truly unwind and enjoy nature! With the Frio being a few miles away at Magers crossing, start your float down to Seven Bluffs crossing. All this just being a few minutes away! Listed @ \$980,000.

Figure 1 is a schematic representation of the experimental design. It shows a vertical timeline of events. At the top, 'Pretest' is indicated. Below it, 'Baseline' is marked. The main experimental phase is divided into 'Block 1' and 'Block 2'. Each block contains a series of 'Trials' (represented by horizontal bars) and 'Rest' periods (represented by gaps). The 'Posttest' is indicated at the bottom of the timeline.



**FILED AND RECORDED**

© 2000 by The McGraw-Hill Companies, Inc.

OFFICIAL PUBLIC RECORDS

Lucile C. Kuttawa

Lucille C. Hutcherson, County Clerk

Uvalde County TEXAS

Apr 14, 2005 01:27:37 PM

74002037 00 1128 334